



Cat[®] Center-Lock[™] Pin Grabber Coupler

with Over-Center Technology

The Solution is Obvious.

CATERPILLAR[®]

Cat® Center-Lock™ Pin Grabber Coupler

with Over-Center Technology

CONFIDENT PRODUCTIVE

Operator Confidence

Patented Locking System

The heart of the Center-Lock Coupler is the over center locking mechanism. This lock uses proven physical principles to keep the coupler locked tight — regardless of work-induced stresses.

Additional Layers of Protection

The over center lock is backed up by a counter-balance valve and positively pressurized hydraulics. This locking system is triply redundant and will only open when the operator moves a switch and curls the bucket.

Visible Locking Mechanism

A unique, highly visible secondary lock clearly shows the operator the status of the coupler — locked or unlocked — and provides definite proof when the coupler has engaged a pin.

Productive Machine

As with any pin grabber coupler, the Center-Lock Pin Grabber Coupler makes any hydraulic excavator an adaptable, highly productive machine by quickly engaging and disengaging multiple work tools at the flip of a switch. In addition, the Center-Lock Pin Grabber Coupler provides much more.

Save Time with Every Tool Change

A visible secondary lock gives operators the confidence to make tool changes safely and quickly. The action of Center-Lock is simpler and quicker than other couplers and requires only curling the bucket to lock and unlock from the tool.

The coupler action also allows the operator the change tools even in limited overhead conditions such as under power lines, bridge decks and street signs.



OVER-CENTER TECHNOLOGY

■ **Cylinder** walls are much thicker and the diameter of the cylinder itself is much larger — giving increased closing power and resistance to extreme forces.

■ A highly visible **Secondary Lock** clearly shows an operator when the coupler is locked on to the pin of a bucket or work tool.

Visibility gives confidence to make tool changes quickly and safely — saving time with every tool change.

And, the **Secondary Lock** has the strength to hold the full weight of a bucket if a back pin is missed when engaged.

■ **Over-Center Technology:** Once the locking mechanism passes over center, the Secondary Lock is held firmly over the front bucket pin. Just like the jaws on a set of locking pliers, the secondary lock holds, and it takes a specific action to release the lock.

■ Hydraulic pressure pushes the **Center-Lock Rocker** into place and keeps the Secondary Lock securely locked over the front bucket pin. Even in the event of hydraulic failure the coupler stays locked on to the pin.

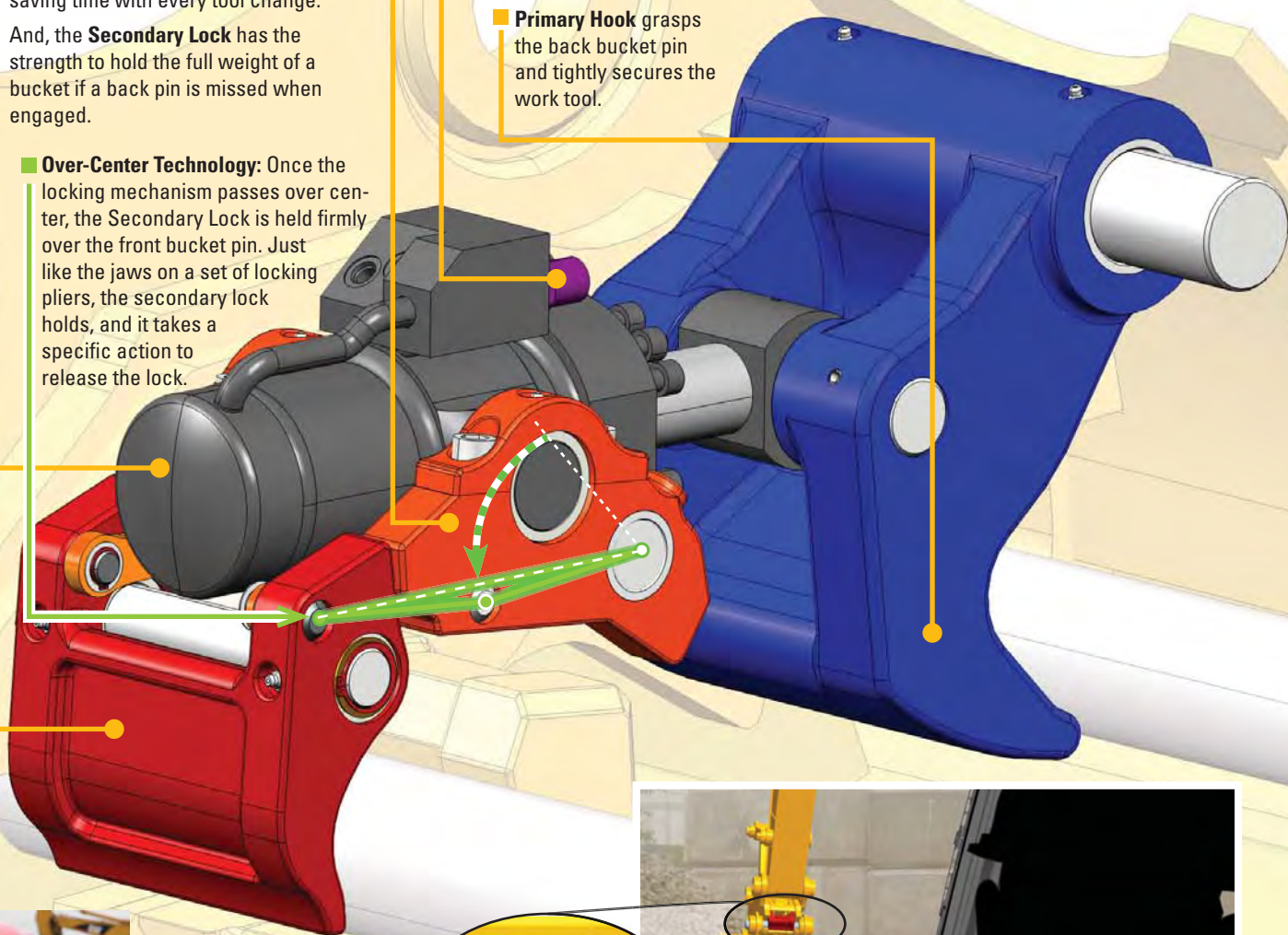
■ **Counterbalance Valve** and positively pressurized hydraulics assure the coupler is locked on to the work tool.

■ **Primary Hook** grasps the back bucket pin and tightly secures the work tool.



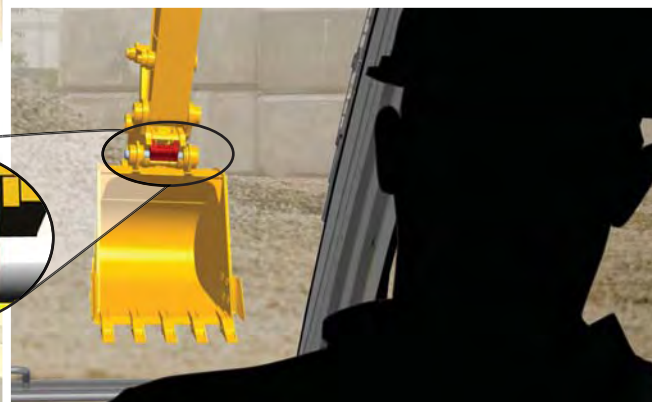
"I particularly like this new Center-Lock... before it even snaps in... I know that bucket isn't going to come off even if the back is not locked in. I know for a fact it isn't coming off."

Sean O'Brien, Operator
Town & Country
Underground Utility
Maryville, WI



"I like the Center-Lock because it holds, you can see the pins just lock right in place and then you just go."

Jim Evans, Foreman/Operator
Champion Environmental Services, Inc.
Green Bay, WI





Versatility for Cat Excavators

Pin grabber couplers allow work tools to be changed quickly, improving overall production and increasing machine versatility. In this respect, Center-Lock Pin Grabber Coupler is no different from traditional pin grabber couplers. The Center-Lock Coupler difference is that the excavator operator can be **certain** of safe and quick tool changes on any job site.

Built for a Wide Range of Excavators

Center-Lock Couplers are designed and built for use on excavators sized from 311 through 385. There are eight different coupler sizes to span this range of machines. Additionally, there are two specially-designed couplers for use with narrow buckets in trenching situations.

Picks Up a Wide Range of Tools

As with traditional pin grabber couplers, Center-Lock engages most any work tool or attachment with pins including buckets, and hydromechanical tools such as compactors, hammers, multi-processors and shears. This compatibility range not only includes the complete Cat line of work tools, but also encompasses a wide range of non-Cat buckets and attachments.

The Cat Solution for Confidence, Productivity

Center-Lock Pin Grabber Coupler is the Caterpillar choice for pin grabber couplers — now and into the future.

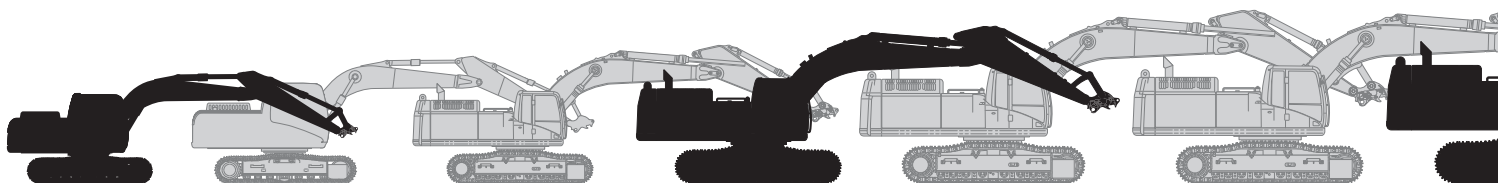
Contact your local Cat dealer for additional information on the Center-Lock Pin Grabber Coupler.

THE OBVIOUS SOLUTION



"I would recommend it to every construction company there is. It's a great tool, it's better than the old one by far. I like it a lot.."

Eric Farmer, Foreman/Operator
King's Construction
Oskaloosa, KS



311 / 312



"Once that red door shuts I can go and start working instantly. ... it's a lot faster that way too. When I had the old ones I'd have to curl it under, make sure the door is locked or pry down on my bucket – which I still do just in case – but you feel more comfortable that it is locked and tight because you can see it. When you close it you can see the bucket get tight. So it's like – grabs it – you can tell when it's grabbing it and when it's not. So you can tell – an operator can tell – when it's on tight and it's safe to go."

Nick Beavers, Operator
Champion Environmental Services, Inc.
 Green Bay, WI

GEDQ0225 (03-09)

For more complete information on Cat products, dealer services, and industry solutions, visit us on the web at www.cat.com

©2009 Caterpillar All Rights Reserved Printed in U.S.A.

Materials and specifications are subject to change without notice. Featured machines in photos may include additional equipment. See your Caterpillar dealer for available options.

CAT, CATERPILLAR, their respective logos, "Caterpillar Yellow," and the POWER EDGE trade dress, as well as corporate and product identity used herein, are trademarks of Caterpillar and may not be used without permission.

CATERPILLAR®
 TODAY'S WORK. TOMORROW'S WORLD.™